



Contents

Food Support Services

- Food Banks
- Food Pantries
- Community Shops and Food Stores
- Additional Support
- Community Groups

Furniture Resources

- Charity Shops
- Charities
- Resources

Cost of Living Support

- Council Support
- Libraries
- Debt Support Services
- Community Groups and Organisations
- Fuel and Energy Support

Welcoming Spaces

- Community hubs

Digital Inclusion Support

- National Organisations
- Organisations and groups
- Libraries

Young People Services

- Children's Centres
- Youth Services
- Family Support

Older People Services

- Local Support Services
- Local Activity Groups

Mental Health and Wellbeing Support

- National Support
- Support Groups

Disability Support

- National Support
- Local Support

Domestic Abuse Services

- National Support
- Local Services

Migrant and Multi-Cultural Support

Additional Support Services

- LGBTQ Services
- Sexual Violence Support
- Hate Crime

Food Support Services in Sandwell



Council Support

You need a voucher to get food from a food bank.
You can get a voucher from:

a helper agency like Citizens Advice

<https://citizensadviceandwell-walsall.org/>

Council's Welfare Rights team

<https://www.sandwell.gov.uk/welfare-rights>

Council's Local Welfare Provision (LWP) scheme.

<https://www.sandwell.gov.uk/benefits-support/local-welfare-provision-food-vouchers>

Council's Welfare Rights team

The council's welfare rights team are a free independent and impartial advice and support on all welfare benefits.

They can help with:

- giving general guidance and support.
- completion of all welfare benefit forms.
- offer representation at appeal tribunals.
- giving advice and support for people who have overpayments of benefits.
- benefits payments when they cease or are reduced.
- offering appointments to discuss any help with benefits issues.
- offering home visits (where appropriate).

***You will need a MySandwell account to apply.**

Local Welfare Provision Scheme

The Council's Local Welfare Provision Scheme (LWP) can give emergency financial help, food vouchers, furniture and white goods to people who:

- have a crisis and don't have the money to deal with it
- are about to leave supported living and need essential items.

Please note: This service is available Monday to Friday only.

To apply for this help you must:

- Be aged 18 or over
- Live in Sandwell
- Have savings of less than £1,000
- Be receiving one of these benefits:
 - Income Support
 - Income based Jobseeker's Allowance
 - Income related Employment and Support Allowance
 - Pension Credit (Guarantee Element only).
 - Universal Credit – Where you qualify for the full Allowance (i.e. There are no deductions for employment).

You can get support with

- Gas and electricity – can provide a PayPoint voucher for pre-pay meters only for up to three days of gas or electricity.
- Travel – can provide a payment voucher for up to three days travel in the West Midlands area.
- Furniture and white goods – we can provide good quality furniture (second hand), mattresses and white goods such as fridges or cookers.

Food Support Services in Sandwell



Food Banks

West Bromwich Food Bank

West Bromwich Community Church Victoria
Street, B70 8EX
0121 580 0068

<https://westbromwichfoodbank.com/>

**Open Monday Wednesday and Friday
12 pm to 2 pm**

Breaking Bread Food Bank

Walsall St, Wednesbury WS10 9BY
07936 744177

Open Wednesday 10 am

Pantries

J's Pantry

4 Community Hub, Wiltshire Way, West
Bromwich, B71 1JU
07365 526 220

<https://www.4communitytrust.co.uk/>

Open Friday 10 am to 2pm

Community Meals

Meals on Wheels

If you can't cook or prepare food for yourself, you may be able to have a cooked or frozen meal delivered to your home by our Community Meals service. This is sometimes known as 'meals on wheels'. Each meal costs £4.00 including delivery. That means it costs around £28 a week to receive a hot, nutritious meal delivered every day including weekends, Bank Holidays and at Christmas. Sandwell Enquiry, PO Box 15825, Oldbury, B69 9EL

sandwell_enquiry@sandwell.gov.uk

0121 569 2266

Provision House Food Club

Supporting residents of Sandwell
80-81 High Street, Dudley, DY1 1PY
0121 285 3970

**Open Tuesday, Wednesday and Thursday
10 am to 2 pm**

The Gap Centre

The Gap Centre, Hargate Lane, West
Bromwich, B71 1PH

0121 525 4442

kirsty@thegaponline.org

<https://www.thegaponline.org>

Tea@ Fill the Gap

by The Gap Centre

Tea at The Gap every Monday Evening
6.30 pm to 8 pm £5 per person includes a 2
course meal. Booking is essential Email
Kirsty@thegaponline.org for menu detail and
booking

Lunch@ Fill the Gap

Every Monday 12 pm to 1 pm

£3.50 per person includes a meal and drinks.

Fill the Gap Cafe

On the last Saturday of every month the gap
open their Community cafe between 1 pm to
3 pm. They offer a welcoming environment
and amazing value brunches for the local
community.

Riverside

National Food Support Services



Council Support

You may be able to get help with essential costs from your local council. This is sometimes known as ‘the Household Support Fund’. This could help if you’re struggling to afford things like:

- **energy and water bills**
- **food**
- **essential items**

Your council may also offer food vouchers to families during the school holidays.

Who the Household Support Fund is for

Funding is aimed at anyone who’s vulnerable or cannot pay for essentials. You do not have to be getting benefits to get help from your local council.

If you get benefits, they will not be affected if you get a payment from a Household Support Fund scheme.

Find out about schemes in your area

Councils decide how to run their schemes. There may be differences in:

- **If you can apply**
- **if or how you need to apply**
- **who money is given to**

For example, some councils share out money through local charities and community groups and some limit household applications to one per year.

Check with your local council to find out what support is available.

<https://www.gov.uk/find-local-council>

Trussel Trust

Food banks in the Trussel Trust network welcome and support everyone who is referred to them,. Volunteers will give a minimum of three days’ emergency food.

How to get a food voucher

In order to get help from a food bank you will need to be referred with a voucher, which can be issued by a number of local community organisations (for instance schools, GPs and advice agencies). Your local food bank can advise which agencies can help.

You can search food banks local to you by visiting: <https://www.trusselltrust.org/get-help/find-a-foodbank/>

If you live in England or Wales please call Help through Hardship for free to talk confidentially to a trained Citizens Advice adviser on: **0808 208 2138** **Monday to Friday, 9 am to 5 pm. Closed on public holidays.)**

They can help address your crisis and provide support to maximise your income, help you navigate the benefits system, and identify any additional grants you could be entitled to. If needed, they’ll issue you with a voucher so you can get an emergency food parcel from your local food bank.

Trussell Trust Helpline - 0800 915 4604
Open Monday to Friday 9 am to 5 pm

National Food Support Services



Feeding Britain

Feeding Britain supports a national network of 80 organisations – ranging from community centres and schools, to local authorities and social enterprises.

To find your local centre please visit

<https://feedingbritain.org/about-us/where-we-work/>

Your Local Pantry

Pantries stock a wide range of food including fresh fruit and veg, frozen and chilled food, meat and dairy products, and long-life tinned and packaged food. To find your local pantry visit

<https://www.yourlocalpantry.co.uk/pantry-listings/>

Independent Food Aid Network

Across the UK there is a growing network of food banks, food distribution charities and local support hubs. To find one nearest to where you live, search the Independent Food Aid Network's interactive map.

Community Shops

Community Shop membership is free and open to those who live locally to a Community Shop store and receive a means-tested benefit. If you think you may be eligible, find your nearest Community Shop and contact them directly about membership.

<https://www.companyshopgroup.co.uk/company-shop/store-locations/>

<https://communitygrocery.org.uk/our-locations/>

National Organisations

Too good to go

On the Too Good To Go app, restaurants, cafes and bakeries list leftover food that would otherwise be thrown away. Users can then browse the map for food near them and pick up a 'magic bag' for a fraction of the original retail cost. Registration to the app is free and users can specify their dietary requirements.

<https://www.toogoodtogo.com/en-gb>

Olio

Olio provides a platform for neighbours to share unwanted food and other items, all for free. People are free to share or pick up anything from an unwanted gift, produce that's on its date from a local store, leftover event catering supplies or excess food that won't get eaten.

<https://olioapp.com/en/>

Karma

The Karma app enables users to rescue fresh food from restaurants, bakeries, cafes and even wholesalers that would have otherwise been thrown away.

<https://save.karma.life/>

NoWaste

NoWaste users can scan receipts and barcodes, log each weekly shop, make lists of what's in, plan meals more effectively and receive automatic expiration reminders.

NOSH

Nosh is an app offering another option to track the food you have in your home. With nosh, users can view categorised expiry and use by dates all on one screen, so they can easily prioritise which foods to use up first.

Riverside

National Food Support Services



KITCHE

The free app has thousands of recipe suggestions that users can filter by the ingredients in their kitchen that need to be used up.

OddBox

Oddbox is a subscription service that delivers straight to your door, fruit & veg that is considered either too large or too small to be sold in supermarkets. When you sign up to Oddbox, you'll need to decide what you would like to be sent and how often. You can choose fruit, vegetables or a selection of both and have them delivered each week or fortnightly.

<https://www.oddbox.co.uk/>

Kids Eat Free Deals

Many restaurants, Supermarkets, Cafes and pubs will have Kids Eat Free Deals. You can find a list at Money Saving Expert.

<https://www.moneysavingexpert.com/deals/cheap-restaurant-deals/#kids>

ASDA

If you dine in at any Asda Café (there are 205 of them) you can get a free bowl of porridge and a hot drink from 8am to midday every day of the week until Wednesday 20 March. There's no minimum spend, so just order at the counter.

Salvation Army

Run food banks year-round from many of their churches and community centres. To find the closest centre to you visit.

<https://www.salvationarmy.org.uk/map-page>

Bread and Butter Thing

Their mobile food clubs give access to nutritious and affordable food taken into the heart of communities. This low cost weekly shop provides essential produce for family eating – fresh fruit and veg, fridge favourites and cupboard staples.

Find your nearest hub by visiting

<https://www.breadandbutterthing.org/become-a-member>

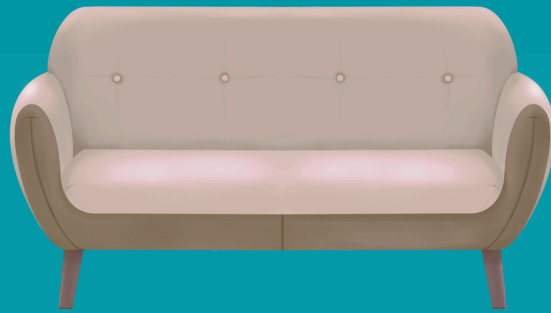
Once you have found the nearest hub Text **07860 063 304** with your full name, postcode, and the name of the hub you will be collecting from.

HAF Programmes

The HAF programme provides free holiday provision, including healthy food and enriching activities, for children in receipt of benefits-related free school meals in England.

To find a programme near you, visit your local council website.

Furniture Support in Sandwell



Local Welfare Provision Scheme

The Council's Local Welfare Provision Scheme (LWP) can give emergency financial help, food vouchers, furniture and white goods to people who:

- have a crisis and don't have the money to deal with it
- are about to leave supported living and need essential items.

Please note: This service is available Monday to Friday only.

To apply for this help you must:

- Be aged 18 or over
- Live in Sandwell
- Have savings of less than £1,000
- Be receiving one of these benefits:
 - Income Support
 - Income based Jobseeker's Allowance
 - Income related Employment and Support Allowance
 - Pension Credit (Guarantee Element only).
 - Universal Credit – Where you qualify for the full Allowance (i.e. There are no deductions for employment).

You can get support with

- Gas and electricity – we can provide a PayPoint voucher for pre-pay meters only for up to three days of gas or electricity.
- Travel – we can provide a payment voucher for up to three days travel in the West Midlands area.
- Furniture and white goods – we can provide good quality furniture (second hand), mattresses and white goods such as fridges or cookers. If we arrange a delivery of furniture or white goods, please make sure you are available to accept the delivery.

Charity Shops

Shelter

Unit 1 - 2 Kings Square, Sandwell Centre,
West Bromwich, B70 7NW
0121 392 8693

**Open Monday to Saturday 9 am to 5 pm and
Sunday 10 am to 4 pm**

Community Transport

4 Kings Square, Sandwell Centre, West Bromwich,
B70 7NW

0121 520 8168

Call to find out opening times

Red Cross

190 Soho Road, Handsworth, B21 9LR
01215 511546

**Open Monday to Saturday 9 am to 5 pm and
Sunday 10 am to 4 pm**

Community Groups

Provision House

Supporting residents of Sandwell
All request for our support package of household goods must come through a referral agency. A referral agency is an organisation like the council or other charities that may be supporting you.

Providing a range of household goods and soft furnishings, to those less fortunate

80-81 High Street, Dudley, DY1 1PY

**www.provisionhouse.co.uk/provision-of-items/
0121 285 3970**

National Furniture Support



Local Council Support

Your local council may be able to help you get hold of items of furniture – as well as helping with other issues, such as debt advice, food and fuel poverty. They do this through what are known as their local welfare assistance schemes (LWASs), also known as local welfare provision (LWP) or crisis support.

Not all councils have these schemes, and some do not provide help with furniture and white goods. If they do help with furniture, most provide it for free, while others will only offer you a loan to get the items yourself. You can usually only apply a limited number of times within a given period.

Most local authorities with a scheme only help with the most essential items such as a cooker, fridge/freezer, and bed. Some will also provide a washing machine, sofa and wardrobe. Many schemes also provide other support beyond furniture, such as help with utility bills and food.

If your council doesn't have a scheme, they will be offering some sort of support through their allocation of the Household Support Fund so we have now included links to every local authority scheme. Authorities are using this funding in different ways, a few are using it for furniture and appliances so do have a look at the link. Local authorities also provide other support such as advice on any additional benefits that you may be entitled to so it is worth getting in touch with them.

To find the details of your local council visit
<https://www.gov.uk/find-local-council>

End Furniture Poverty

End Furniture Poverty have a list of resources and advice on their website on how to access new and preloved furniture.

<https://endfurniturepoverty.org/>

Reuse Network

The Reuse supports reuse charities across the UK to help them alleviate poverty, reduce waste and tackle climate change.

You can search charity shops, projects and groups near you who offer affordable household items including furniture, electrical appliances, IT equipment and more.

Search by visiting

<https://reuse-network.org.uk/>

Charities

Glasspool Trust

UK-wide charity that provides grants support for people experiencing financial hardship, with no restrictions on who they can help.

<https://www.glasspool.org.uk/>

Buttle UK

Support children and their families, including the provision of beds, and offer more comprehensive packages of support.

<https://buttleuk.org/apply-for-a-grant/>

Family Fund

Helping vulnerable children and young people up to the age of 18 who are experiencing a crisis or emergency. They provide essential furniture items and they accept direct applications.

<https://www.familyfund.org.uk/>

National Furniture Support



Facebook Groups - There are several groups on Facebook that offer free or low-cost furniture. **To find groups search Help Groups or Bargain Groups in your area.**

Second Hand Furniture Websites
Facebook Marketplace and Groups
Gumtree
Freecycle
Pre-Loved
Freeads
VivaStreet
Freegal

Charity Shops - There are many charity shops that sell low-cost second-hand cost second hand furniture. These include:

Barnardo's Donation Centres
Age UK
British Heart Foundation Furniture Furniture and Electrical Stores
Red Cross
Cancer Research
Oxfam
Salvation Army
Local Hospice Charities

UK Furniture Bank

UK Furniture Bank in partnership with the referring including social services and community centres. There are some costs involved, although these are kept to a minimum. **They only accept requests direct from your Support Worker, Housing Officer, Welfare Worker, or local Faith Organisation, who must apply on your behalf.**
<https://theukfb.co.uk/furniture-request-form>

Cost of Living Support in Sandwell



Council Support

Sandwell Consortium - Cost of Living Programme

Offer a free and confidential service:

- Benefits and debt advice
- Energy advice
- Help with budgeting
- Employment support
- Help to get online

The service is being delivered in a range of community settings around Sandwell: to find out more visit

<https://sandwellconsortium.co.uk/service/colt/>

Community Support - Advice and Guidance

Welfare Rights Team Sandwell

0121 569 3158

www.sandwell.gov.uk/welfarerights

Open Monday to Friday 9 am to 4.30 pm

West Bromwich Library

316 High St, West Bromwich B70 8DZ

Runs Friday 9.30 am to 1.30 pm

Sandwell Family Hubs

Free independent advice in Sandwell Family Hubs.

Greets Green Sure Start Family Hub, Wattle Road, West Bromwich, B70 9EZ

0121 612 5131

Confederation of Bangladeshi Organisations

Greets Green Resource Centre Harwood Street, West Bromwich, B70 9JF

0121 500 5441

Sandwell Council Welfare Rights Team

0121 569 3158

Citizens Advice Sandwell and Walsall

CASSIE (Citizens Advice Supporting Social Inclusion and Equality) & CASPER (Citizens Advice Supporting People's Economic Recovery) aims to support those isolated or unable to travel to alternative services.

For up to date timetable visits please visit

<https://citizensadvice-sandwell-walsall.org/get-help/mobile-advice-unit/>

Employment Support

Sandwell Consortium

Sandwell Consortium and its partners provide a range of employment support and skills learning in local community venues. You can find out more by visiting

<https://sandwellconsortium.co.uk/service/employment-and-skills/>

Employment and Skills support - Think Sandwell by Sandwell Council

The Council House, Freeth Street, B69 3DE

0121 569 3020

Virtual Appointments Available - email

enquiries_recruitment@sandwell.gov.uk to book

Credit Unions

City Save

*no public access to offices

0121 616 6200

enquiries@citysave.org.uk

National Cost of Living Support Benefits



GOV.UK

The GOV.UK website has a list of resources to help support those who are struggling due to the cost-of-living crisis.

<https://www.gov.uk/>

Benefits and Financial Support

There are several benefits that you may be eligible for including:

Universal Credit - If you're on a low income, you're out of work or you cannot work

Carer's Allowance - If you care for someone who gets certain benefits at least 35 hours a week

New Style Employment and Support Allowance (ESA) - If you have a disability or health condition that affects how much you can work or if you need support to get back into work.

New Style Jobseeker's Allowance (JSA) - If you need help when you're looking for work

Access to Work - If you have a physical or mental health condition or disability you may be able to receive support to help you stay in work.

To find out what benefits and support you may be eligible for visit

<https://www.gov.uk/cost-of-living/benefits-tax-work>

Help for Households

See what support is available to help with the cost of living and save money with our energy saving tips.

<https://helpforhouseholds.campaign.gov.uk/>

Personal Independence Payment

Personal Independence Payment (PIP) can help with extra living costs if you have both:

- a long-term physical or mental health condition or disability
- difficulty doing certain everyday tasks or getting around because of your condition

You can get PIP even if you're working, have savings or are getting most other benefits.

To find out more visit - <https://www.gov.uk/pip>

Citizens Advice

The national charity and network of local charities offer confidential advice online, over the phone, and in person, for free.

You can contact an adviser through the national phone service: Adviceline (England): **0800 144 8848**

Relay UK - if you can't hear or speak on the phone, you can type what you want to say: **18001** then the Adviceline or Advicelink number

You can use Relay UK with an app or a textphone. There's no extra charge to use it.

Adviceline's available 9am to 5pm, Monday to Friday. It's usually busiest at the beginning and end of the day. It's not available on public holidays.

To find your nearest Citizens Advice visit <https://www.citizensadvice.org.uk/about-us/contact-us/contact-us/contact-us/>

National Cost of Living Support Debt Help



Citizens Advice

Full debt and consumer advice service in England and Wales. Many have specialist case workers to deal with any type of debt, including repossessions and negotiation with creditors. If you live in England or Wales, get in touch by:

Web chat: The web chat service is open Monday to Friday, 8am - 7pm and Saturday 9.30am - 1pm (except bank holidays).

0800 240 4420 (debt helpline) The debt helpline is available 9am to 5pm, Monday to Friday (excluding bank holidays).

Step Change Debt Charity

Online support is available via the debt advice tool where you can create a budget and get a personal action plan with practical next steps. .

0800 138 1111 Opening times: Monday to Friday, 8am to 8pm, Saturday, 8am to 2pm (closed on Sundays and bank holidays).

<https://www.stepchange.org/>

National Debtline

National Debtline provides free advice and resources to help people deal with their debts. Advice is available over the phone, online and via webchat.

0808 808 4000 Opening times: Monday to Friday, 9am to 8pm, Saturday, 9.30am to 1pm.

<https://www.nationaldebtline.org/about-us/>

Debt Advice Foundation

Debt Advice Foundation is a debt advice and education charity offering free, confidential support and advice to anyone worried about loans, credit and debt.

0800 043 40 50 Monday to Friday 8am to 6pm

Christians Against Poverty

National debt counselling charity with a network of 160 centres based in local churches, offering hope and a solution to anyone in debt (not just Christians).

<https://capuk.org/>

PayPlan

PayPlan offer free, simple debt advice to anyone who needs it. When you go to them for debt advice, they will show you all the different debt solutions that are out there so you've got a clear idea of what your options are, and how each one could help you. They can also advise you on what the best solution is for your circumstances, plus any other options that might work for you.

0800 316 1833 Available between 8am to 8pm Monday to Friday and 9am to 3pm on Saturday.

<https://www.payplan.com/>

Community Monday Advice

Community Money Advice (CMA) is a charity dedicated to supporting and helping community groups, churches and groups of churches set up free, face to face debt & money advice centres in their neighbourhood.

<https://www.communitymoneyadvice.com/freedom-from-debt/get-help>

Turn2Us

Turn2us is a national charity providing practical help to people who are struggling financially. You can use their free Benefits Calculator and Grants Search to find out what help you can get.

<https://www.turn2us.org.uk/>

National Cost of Living Support Services



Money Advice service

The Money Advice Service is a free, impartial advice, to help improve your finances, set up by government to help keep track and plan ahead
0800138 7777

Credit Unions

Credit unions come in all shapes and sizes. Whether you're looking for a credit union with online and phone banking, a payroll partnership with your employer, a local branch or service point you can walk into – or a combination of all three – there's a good chance you'll find the credit union you're looking for to meet your needs.

To find a credit union near you visit

<https://www.findyourcreditunion.co.uk/>

Fuel and Energy Support

Energy Projects Plus

Free and impartial advice to help you save money on your energy bills.

0800 043 0151

<https://www.epplus.org.uk/>

British Gas Energy Trust

<https://britishgasenergytrust.org.uk/>

Scottish Power Hardship Fund

<https://www.scottishpower.co.uk/support-centre/help-paying-your-bill/hardship-fund>

E.On Energy Fund

<https://www.eonenergyfund.com/>

Support from Banks

Most banks offer help for those struggling during the current cost of living surge, with most stating that they plan to ramp up their guidance and support services.

National Cost of Living Support Employment



Government Support

Find a Job in England, Scotland or Wales through the government's official job vacancy service that offers a simple way for people to search for the latest jobs.

Find additional job opportunities through the Job Help website.

<https://jobhelp.campaign.gov.uk/>

Apprenticeship's

An apprenticeship combines practical training in a job with study.

You can start an apprenticeship if you're:

- 16 or over - there's no upper age limit
- not in education (full or part-time)

You can have a previous qualification, like a degree, and still start an apprenticeship.

<https://www.gov.uk/apply-apprenticeship>

Learn online for free

Learn online for free with The Skills Toolkit, where you can access more than 70 courses in digital, numeracy and employability skills.

<https://nationalcareers.service.gov.uk/find-a-course/the-skills-toolkit>

Get a free Level 3 qualification

If you are 19 or over and don't yet have A levels or equivalent you can now take your first Level 3 qualification for free. There are hundreds of free

courses available linking to jobs in sectors such as building and construction, health and social care, accounting, engineering, environmental conservation and more.

To find out more visit

<https://www.gov.uk/guidance/free-courses-for-jobs>

The Job Entry Targeted Support Scheme

The Job Entry Targeted Support scheme is providing six months of personalised support for people who have been unable to find work within the first 3 months of unemployment.

To find out more visit <https://www.gov.uk/>

Get support from a work coach

Work coaches use their experience of the jobs market to help you find opportunities that match your skills, which could include types of work you've never considered before. Get support from your work coach by asking at your nominated Job Centre.

National Careers Service

Provide careers information, advice and guidance. We can help you make decisions at all stages in your career.

Call 0800 100 900 to speak to an adviser.

8am to 8pm Monday to Friday, 10am to 5pm Saturday and bank holidays.

<https://nationalcareers.service.gov.uk/>

Employment support in Sandwell



Multiply (Numbers for Life)

Greets Green Resource Centre, Harwood Street
West Bromwich, B70 9JF

01215005441 info@cbo786.co.uk

<https://www.cbo786.co.uk>

Training by OSCAR Sandwell

120 Lodge Road, West Bromwich, B70 8PL

01215250556

oscar-sandwell@hotmail.co.uk

<https://www.oscarsandwell.org.uk>

IT Training by Skills Work and Enterprise

SWEDA The Business Centre, Church Street
West Bromwich, B70 8RP

0121 525 2558 sweda@sweda.org.uk

<https://www.sweda.org.uk>

Employment Advice

SWEDA The Business Centre, Church Street,
West Bromwich, B70 8RP

0121 525 2558 sweda@sweda.org.uk

<https://www.sweda.org.uk>

Business Advice & Guidance

SWEDA The Business Centre, Church Street,
West Bromwich, B70 8RP

0121 525 2558 sweda@sweda.org.uk

<https://www.sweda.org.uk>

Hateley Heath Further Education and Training Centre

Hateley Heath Further Education and
Training Centre, West Bromwich, B71 2RP

0121 556 7426

linda_matthews1@sandwell.gov.uk

<https://www.sandwell.gov.uk>

Functional Skills English and Maths

by Empowering People In Change – C.I.C
Greets Green Community Centre, Wood Lane
157 Wood Lane, West Bromwich, B70 9PT

07366 457602

info.epic@mail.com

<http://www.epiccic.com>

Pre-Employment Support

by The Kaleidoscope Plus Group
321 High Street, West Bromwich, B70 8LU

0121 565 5605

Training@kaleidoscopeplus.org.uk

<https://www.kaleidoscopeplus.org.uk/>

Cost of Living Support Programme - West Bromwich

Central Library, 316 High St, West Bromwich
B70 8DZ

0121 533 2568

info@sandwellconsortium.co.uk

<http://www.sandwellconsortium.co.uk/contact/>

Welcoming Spaces In Sandwell



Welcoming Spaces/Warm Hubs

Many warm hubs are based in Churches, Community Venues and Libraries. They offer a safe space to access food and refreshments, advice and guidance on benefits and keeping your home warm, activities and the opportunity to make new friends.

Warm Welcome

Warm Welcome Spaces are opening their doors to local communities, offering everyone a free, warm, welcoming and friendly space.

You can search spaces near you by visiting <https://www.warmwelcome.uk/>

Libraries

Libraries are Welcoming Spaces where people can meet up, socialise, access support on issues such as money, welfare and mental wellbeing, access computers, free wi-fi and charging points, and heated spaces.

Search for your local library here:

<https://www.gov.uk/local-library-services>

Farley Park Place of Welcome

Farley Park Lodge Whitehall Road, West Bromwich, B70 0HF

0121 532 4023

gbcf@btconnect.com

www.greatbridgecommunityforum.co.uk/

Sandwell Welcoming Spaces

Shireland Biomedical UTC, West Bromwich
B70 8DJ

01217400824

info@ewacic.com

Riverside

National Digital Inclusion Support



Job Centre Support

Connectivity provider TalkTalk is rolling out a new voucher scheme that gives jobseekers across the UK free access to high-quality broadband.

Your work coach will be able to help support you to access further information

Social Tariffs

Internet access at home can be expensive, some broadband providers offer social tariffs – broadband and phone packages at a reduced price for people claiming Universal Credit, Pension Credit as well as some other benefits. Some providers call them ‘essential’ or ‘basic’ broadband.

Visit www.ofcom.org.uk and search social tariffs to find out more.

The Department for Education

The Department For Education offers free qualifications and provides access to free, high-quality provision to equip them with the essential digital skills they need for life and work.

To be eligible for full funding under the entitlement:

- Be a UK resident
- Aged 19 and over
- Do not have the essential digital skills required to operate effectively in work and day to day life

www.gov.uk/guidance/free-qualifications-for-adults-with-low-digital-skills

Get Online @ Home

Get Online @ Home sells heavily discounted, refurbished computers and tablets.

<https://www.getonlineathome.org>

Family Fund

Devices, such as computers and tablets, can have a huge impact on disabled children and their families. Family Fund can help support families.

www.familyfund.org.uk

The Charity Excellence

The Charity Excellence Framework provides a resource for a wide range of free laptops, computers, software, IT support and grants for UK charities and social enterprises.

www.charityexcellence.co.uk

The National Data Bank

The National Databank is a national foodbank for connectivity data. Run by Good Things Foundation, data to help almost 500,000 people will be donated by Virgin Media O2, Vodafone, and Three Mobile from September 2022.

www.goodthingsfoundation.org

National Device Bank

Good Things Foundation is building the UK's first ever National Device Bank. Devices will be provided to people in need by thousands of community organisations in Good Things Foundation's network.

<https://www.onlinecentresnetwork.org>

Digital Inclusion Support in Sandwell



Libraries

Libraries across the UK offer a range of different services and support including computer and internet access, digital learning, printing, group activities and wellbeing support.

Search for your local library here:

<https://www.gov.uk/local-library-services>

Learning

Learn My Way

Learn My Way is a website of free online courses for beginners to develop digital skills to make the most of the online world.

www.learnmyway.com

Barclays Digital Wings

Barclays Digital Wings platform offers free online digital skills courses from how to stay safe online, use social media, make your business digital and much more. Available to everyone, no eligibility criteria.

<https://digital.wings.uk.barclays/>

FutureLearn

FutureLearn provide a suite of free digital skills courses from digital skills for work and life to advanced skills like web analytics, social media, AI and much more.

www.futurelearn.com

Sandwell Language Network

The Sandwell Language Network (SLN) provides a programme of free, community-based English language learning support across the borough.

To find out more visit

<https://sandwellconsortium.co.uk/service/sandwell-language-network/>

Reach and Reconnect

Health Literacy, targeted support to:

- Better understand how to prevent ill health
- Better manage existing conditions
- Improve access to primary care and community pharmacies
- Improve self-management skills and accessing local peer support
- Instil confidence to support family members
- Enable access to specialist services

Digital literacy targeted support to:

- Equip residents with day-to-day digital skills, including safety and security, especially those with English as a second language
- Overcome digital barriers, enabling online access to:
 - Health and healthcare e.g., appointments, self-care plans, health apps, ordering prescriptions
 - Information, support, and advocacy relating to wider factors impacting on health, e.g., housing, skills and employability, loneliness and isolation.

For more information contact 0121 533 2568 or info@sandwellconsortium.co.uk

Support for Young People in Sandwell



Children's Centres

West Bromwich Central Family Hub

Wattle Road, West Bromwich, B70 9EZ
0121 500 4011

<https://www.barnardos.org.uk/get-support/services/wednesbury-west-bromwich-family-hubs>

Support

Connexions Sandwell

Are you aged 13-19 (or up to 25 if you have learning difficulties or disabilities)? If so, Connexions Sandwell is here to help you with high quality independent careers advice and guidance that will enable you to fulfil your potential through work, an apprenticeship or a further learning opportunity.

0121 569 2955 (or free phone 0800 358 4800)
sandwell_connexions@sandwell.gov.uk

Sandwell Early Help Partnership

The Early Help Partnership brings together schools, voluntary agencies, community organisations, faith groups, Sandwell Council, health providers, police and fire services and others, to work more closely supporting children and families in Sandwell.

Landchard House, Victoria Street, West Bromwich B70 8ER

0121 525 1127
earlyhelp@scvo.info

Guides for Families

Online resources from local providers which can be used by all when supporting/working with children, young people and families.

<https://sandwellearlyhelp.info/guides-for-families>

HAF Holiday Activities

Live in Sandwell and looking for activities to keep the children entertained during the holiday, you can find a list of activities by visiting

<https://holidayactivities.sandwell.gov.uk/>
Go Play Sandwell, Corbett Street, Smethwick B66 3PX

haf_sandwell@sandwell.gov.uk

Just Youth, Youth Bus

Delivering outreach youth activities and support.
0121 569 2899

youngpeople_services@sandwell.gov.uk

To find out more visit

<https://www.justyouth.org.uk/youth-bus/>

Lodge Road Youth Club

Lodge Community Centre, Lodge Road, West Bromwich, B70 8PJ

To find out more contact

youngpeople_services@sandwell.gov.uk

Delivering sessions Tuesday and Thursday 6 pm to 8 pm

Black Country Impact

If you are aged 16-29, not in education, employment or training you can access support through Black Country Impact.

They can assist you in finding short training courses, an apprenticeship or a job.

0121 569 2099

enquiries_recruitment@sandwell.gov.uk

Greets Green Play Area / Community Hub

Greets Green Resource Centre, Harwood Street, West Bromwich, B70 9JF

0121 500 5441

info@cbo786.co.uk

<https://www.cbo786.co.uk>

Support for Young People in Sandwell



The Kaleidoscope Plus Group,

Primary Mental Health Workers (PMHW's) who work with children and young people, families and carers and professionals providing support where there are emotional or mental health concerns. We work with professionals working with children and young people, families and carers to support their work where there are concerns about emotional wellbeing and mental health.

321 High Street, West Bromwich

info@kaleidoscopeplus.org.uk

0121 565 5605

<https://kaleidoscopeplus.org.uk>

SPDC Family Club

Sports Club for disabled children and young people

West Bromwich Leisure Centre, Moor Street, West Bromwich, B70 7AZ

0121 565 2410 admin@sp-dc.org

<https://www.sp-dc.org>

On Your Doorstep: West Bromwich - Art - Music - Gaming - Media

Cielo Cafe, 38 Carters Green, West Bromwich B70 9LG

0121 524 3232 hello@homegrown31.co.uk

<https://creativeacademies.co.uk>

Hill Top Youth Club

Hill Top Community Centre, Hill Top, West Bromwich, Wednesbury

B70 0RZ,

0121 569 2899

steven_walker@sandwell.gov.uk

<https://www.justyouth.org.uk>

Free Boxing in the Community

West Bromwich Leisure Centre, Moor Street West Bromwich, B70 7AZ

07801 930834

cjboxclever@gmail.com

<https://www.instagram.com/boxclevercj/>

Farley Park Stay & Play

Packed with a bunch of activities, sensory play, sing-a-long and so much more. Free of Charge.

50p for tea/coffee and toast

Farley Park Lodge Whitehall Road, West Bromwich, B70 0HF

0121 532 4023 gbcf@btconnect.com

Hill Top Library

Park Buildings, Hill Top, West Brom, B70 0RZ

0121 569 4929

racy_wheatley@sandwell.gov.uk

<https://www.sandwell.gov.uk>

Sikh Helpline Cycling Club

126 High St, West Bromwich - gurdwara carpark on George Street lower carpark space

West Bromwich, B70 6JW

07999 004 363

admin@sikhhelpline.com

<https://www.sikhhelpline.com>

The Albion Foundation - PL Kicks (Free Football)

George Salter Academy, West Bromwich B70 9UW

07387104296

darryl.hickman@albionfoundation.co.uk

<https://www.wba.co.uk/albion-foundation/book-now/pl-kicks>



Support for Young People in Sandwell



Sandwell Voice

The space for children and young people in Sandwell

Brought to you by Sandwell Children's Trust
Sandwell Children's Trust, Wellman Building
Dudley Road, Oldbury, B69 3DL
<https://sandwellvoice.co.uk/>

Parent and Toddler Group

(term time only) by The Gap Centre
Play area indoor and outdoor (depending on weather)

Monday 9 am to 11 am
The Gap Centre, Hargate Lane, West Bromwich
B71 1PH
0121 525 4442
louise@thegaponline.org

National Support for Young People



Children's Centres

Children's centres bring together a range of free services for children from birth to five, and their families. Services vary at each centre according to local community needs but all centres provide child and family health, family support services and a range of parent and toddler activities.

Contact your local council to find out about Sure Start centres in England.

<https://www.gov.uk/find-local-council>

National Support Services

Youth Access

Youth Access works with organisations delivering support for young people. You can search their Find Help page to find support near you.

<https://www.youthaccess.org.uk/our-network/find-help>

National Youth Advocacy Service

The Get Support page offers a wide range of advice, guidance and support available for many issues affecting young people.

<https://www.nyas.net/get-support/>

Young Minds

Mental health support for young people, parents and carers. Young Minds provide young people with tools to look after their mental health. The website is full of advice and information on what to do if you're struggling with how you feel.

www.youngminds.org.uk

Young Minds Textline: Text YM to 85258

The Mix

At The Mix, trained staff provide help for young people aged 11-25. This Mix isn't just about young people and mental health, they also provide support for relationship issues, working life, school life, housing, depression and any other issues all year round.

Support Available.

Crisis Messenger: If you feel like you can't cope or are worried about how you are feeling, you can contact the crisis messenger 24 hours a day, 7 days a week by texting **THEMIX** to **85258**. The text messaging support service is free and for any issue.

Email Support: The Mix can help you find the information you need.

<https://www.themix.org.uk/get-support/speak-to-our-team/email-us>

One-to-one chat One to one chat allows you to live message trained helpline supporters about any issue that is troubling you. The one-to-one chat is open from 4pm to 11pm, Monday to Friday.

<https://www.themix.org.uk/>

Mind - Useful contacts for supporting Children and young people

<https://www.mind.org.uk/for-young-people/how-to-get-help-and-support/useful-contacts/>

National Support for Young People



Kooth – Online Counselling and Support (11-25)

Kooth is an, online counselling and emotional well-being platform for children and young people, accessible through mobile, tablet and desktop.

Access through www.Kooth.com

0203 984 9337 contact@kooth.com

PAPYRUS

PAPYRUS is the national charity dedicated to the prevention of young suicide.

HOPELINE247 advisers want to work with you to understand why thoughts of suicide might be present. They also want to provide you with a safe space to talk through anything happening in your life that could be impacting on your or anyone else's ability to stay safe.

- For children and young people under the age of 35 who are experiencing thoughts of suicide
- For anyone concerned that a young person could be thinking about suicide

Call: 0800 068 4141

Text: 07860039967

Email: pat@papyrus-uk.org

Line are open 24 hours every day of the year (Weekends and Bank Holidays included)

*If you are not able or prefer not to speak English, please request Language Line when calling for support.

Safe4Me

The Safe4me website provides educators, service providers and parents with information and resources to help educate, guide and support children and young people to keeping safe.

<https://www.safe4me.co.uk/support-services/>

National Services

National Citizenship Service

Delivers a range of experiences for young people across the UK.

<https://wearencs.com/> 0800 197 8010

Duke of Edinburgh

Delivers a range of experiences for young people across the UK.

<https://www.dofe.org/>

Virtual KEEN

Inclusive online activities for young people

www.keenuk.org/virtualkeen

Support for different identities and communities

Bayo - An online search tool to find mental health and wellbeing support or services, run by and for the Black community.

bayo.uk

Being Gay is OK - Provides advice and information for LGBTQIA+ people under 25.

bgiok.org.uk

Kids of Colour - Online platform for young people to learn about race, identity and culture, and to challenge racism. Offers a YouTube channel, summer school and workshops.

kidsofcolour.com

Mermaids UK - Support for transgender, nonbinary and gender-diverse people up to 18. Runs events, local groups, online courses and a webchat.

0808 801 0400

mermaidsuk.org.uk

National Support for Young People



Muslim Youth Helpline - Provides faith and culturally sensitive support to young Muslims by phone, webchat, WhatsApp and email.

0808 808 2008
myh.org.uk

The Proud Trust - Support for LGBTQIA+ young people through youth groups, peer support, mentoring schemes and a webchat.

0161 660 3347
theproudtrust.org

Stonewall - Information and advice for LGBTQIA+ people on a range of issues, like coming out and hate crimes. Provides an information phoneline for people and their families.

0800 050 2020
stonewall.org.uk

Switchboard - Provides a helpline, webchat and nationwide database of LGBTQIA+ services. A safe space to discuss topics like sexuality, gender identity and wellbeing.

0800 0119 100
hello@switchboard.lgbt
switchboard.lgbt

Support for grief, trauma and abuse

Help 2 Make Sense - Advice and resources for coping with grief, plus an email helpline and webchat. **help2makesense.org**

Child Bereavement UK - Help for children, young people, parents and families after the death of someone close. Offers support through local services, groups for young people, plus films and blogs.

0800 028 8840
childbereavementuk.org

Hope Again - Information, resources and support for young people coping after the death of someone close.

0808 808 1677
hopeagain@cruse.org.uk
hopeagain.org.uk

Kidscape - Information and advice for young people, parents and carers with concerns about school bullying and abuse.

kidscape.org.uk

Stop Hate UK - Offers a 24-hour phone and text service for people under 18 who have experienced or seen a hate crime. Provides an online service for reporting hate crimes.

0808 801 0576
07717 989025 (textline)
stophateuk.org

Victim Support - Emotional and practical support for people affected by crime and traumatic events. Offers specific information for young people.

0808 168 9111

Support for families in Sandwell



Black Country Children

Black Country Children's is a family of sites for parents, carers and other professionals to access universal advice, including top tips and activities, for children's and adolescent services across the Black Country.

<https://www.blackcountrychildrens.nhs.uk/camhs/>

Family support and food parcels

by The Gap Centre

Offering a service for sign pointing and support. also offering referrals for local food parcels in the community contact Kirsty@thegaponline.org for referrals and sign posting

The Gap Centre, Hargate Lane, West Bromwich B71 1PH

0121 525 4442

kirsty@thegaponline.org

<https://www.thegaponline.org>

Toddler2Teens Clothing Bank

by Brandhall Community Hub

Supporting families in the local community with new and preloved children's clothing for FREE!

Open Monday to Friday 10 am to 4 pm. Times may change during school holidays.

151 Castle Road West, Oldbury, B68 0EL

07377 935103

toddlerteenclothingbank@gmail.com

King's Oak Uniform Bank

by Brandhall Community Hub

Supporting families in the community with new and preloved school uniform for FREE! All school uniform and supplies will be free of charge.

Uniform availability is on a first come, first served basis. For more details please contact.

151 Castle Road West, Oldbury, B68 0EL

07718499775

kingsoakuniformbank@gmail.com

<https://www.kingsoakuniformbank.org.uk>

National Support for families



Healthy Start

If you're more than 10 weeks pregnant or have a child under 4, you may be entitled to get help to buy healthy food and milk. If you're eligible, you'll be sent a Healthy Start card with money on it that you can use in some UK shops.

You can use your card to buy:

- plain liquid cow's milk
- fresh, frozen, and tinned fruit and vegetables
- fresh, dried, and tinned pulses
- infant formula milk based on cow's milk

You can also use your card to collect:

- Healthy Start vitamins – these support you during pregnancy and breastfeeding
- vitamin drops for babies and young children – these are suitable from birth to 4 years old

<https://www.nhs.uk/start-for-life/>

Family Action

Family Action supports families who are in financial hardship, mental health problems, social isolation, learning disabilities, domestic abuse, or substance misuse and alcohol problems.

You can search activities and support local to you by visiting: <https://www.family-action.org.uk/worried/in-your-area/>

Baby Banks

A baby bank works in a similar way to a food bank, but instead of giving out food, families can get free baby items. This can include nappies and toiletries, clothing, cots, prams, highchairs and toys.

Baby banks don't only provide help for babies, however. With some you may be able to get clothing and items for children up to age sixteen. You can find baby banks near you by visiting <https://littlevillagehq.org/uk-baby-banks/> <https://www.babybankalliance.org/baby-bank-map> <https://baby-basics.org.uk/>

Period and Hygiene Product Support

Many food banks, pantries and community centres will have access to free sanitary products.

Bloody Good Period - Give period products to those who can't afford them and provide reproductive health education to those less likely to access it. hello@bloodygoodperiod.com

Morrisons - Package for Sandy

Customers in need can now go to any Morrisons customer service desk nationwide and ask for a package for 'Sandy' or a 'period product pack'. The customers will then be given a free discreet envelope with sanitary products and no questions asked.

Freedom4Girls - provides period products to those in Leeds, Sheffield, West Yorkshire, and select other regions of the UK <https://www.freedom4girls.co.uk/request-products/>

Support for Older People in Sandwell



Extend Gentle Exercise Classes

by West Bromwich African Caribbean
Extend gentle exercise involves gentle movement to music for men and women over the ages of sixty years of age
Thomas Street, West Bromwich, B70 6LY
0121 525 9177
info@wbacrc.org.uk

The Cinnamon Trust:

National charity for elderly or terminally ill people and their pets. Network of volunteers who can visit homebound owners to take dogs for daily walks, foster pet as one of their family when owners face time in hospital, take pets to the vet, buy pet food, clean budgie cage.
01736 757900
www.cinnamon.org.uk

Re-engage

Group and one-to-one social activities will help older people connect with others.
0800 716543

Omega (befriending service for caregivers / carers)

Chatterbox Action Against Loneliness telephone chat
01743 245088 chatterbox@omega.uk.net
A Letter from Louise pen pal befriending
01743 245 088 aletterfromlouise@omega.uk.net

Tax Help for Older People

01308 488066 taxvol@taxvol.org.uk

Dementia UK - 0800 888 6678

Alzheimers Society - Support for those living with, or caring for those with dementia.
Telephone: 0333 150 3456

BUDS (Better Understanding of Dementia Sandwell)

Barlow Community Hall, Pound Rd, Oldbury B68 8NB
0121 565 3721 <http://www.buds.co.uk/>
Open Monday to Friday 9 am to 4 pm

National Support for Older People



Age UK - Age UK's Advice Line is a free, confidential national telephone service for older people, as well as their families, friends, carers and professionals. The team will give you information that's reliable and up to date and help you access the advice you need.

Age UK Advice Line: 0800 678 1602
Lines are open 8 am to 7 pm, 365 days a year

The Silver Line Helpline run by Age UK is a free, confidential telephone service for older people. We provide friendship, conversation and support 24 hours a day, 7 days a week.
Call free on 0800 4 70 80 90

Age UK day centres provide older people with both practical assistance and a chance to socialise, with support from trained staff and volunteers. You can find services in your area by visiting
<https://www.ageuk.org.uk/services/in-your-area/day-centres/>

IT Training - Many local Age UKs offer computer training for older people. In these courses, things are explained clearly and in plain English to help you get online. You can find services in your area by visiting
<https://www.ageuk.org.uk/services/in-your-area/it-training/>

Handyperson service - This service offers older people extra help with small practical jobs to make their lives easier and safer around the home. You can find services in your area by visiting -
<https://www.ageuk.org.uk/services/in-your-area/handyperson-services/>

Social Activities - Each local Age UK has its own timetable of clubs and classes. Examples include Arts & Crafts, Bridge group, Coffee morning, Men in Sheds, Photography club, Pub lunch, Quizzes, Tea dance and much more.

You may need to book a place in the class and you will usually pay a small amount to take part. You can find services in your area by visiting
<https://www.ageuk.org.uk/services/in-your-area/social-activities/>

Friends of the Elderly - Grants for older people
Friends of the Elderly's grants programme is designed to assist older individuals facing financial difficulties. Grants can be used to cover essential expenses such as purchasing a new fridge, paying unexpected bills, food, clothing, or covering gas and electricity costs.

<https://www.fote.org.uk/our-charity-work/grants-2/>

Hourglass

Support and information for older people and those concerned about an older person facing abuse or exploitation.

08088088141

Ability Net

Ability Net has a UK-wide network of Tech volunteers who offer free technology support to older people and disabled people. You may need help to set up a new device, connect to the internet, have a problem with a computer virus or require support to connect to family and friends online.

0300 180 0028

<https://abilitynet.org.uk/free-tech-support-and-info/about-our-support>

National Mental Health and Wellbeing Support



Mind

Mind offers help and support to those who need it most. There's more than 100 local Minds across England and Wales, offering specialised support and care based on the needs of their communities.

Local Minds run mental health services in local communities. Anyone can get in touch – you don't need to have a GP referral. Each local Mind is different, but the services they offer might include:

- Talking therapy
- Crisis helplines
- Advocacy
- Employment and training schemes
- Counselling
- Befriending services

To find support near you visit

<https://www.mind.org.uk/information-support/local-minds/>

Samaritans - To talk about anything that is upsetting you, you can contact Samaritans 24 hours a day, 365 days a year. You can call **116 123** (free from any phone), email jo@samaritans.org or visit some branches in person. To find your local branch visit <https://www.samaritans.org/branches/>

SANEline - If you're experiencing a mental health problem or supporting someone else, you can call **SANEline** on **0300 304 7000 (4.30pm–10pm every day)**.

National Suicide Prevention Helpline UK.

Offers a supportive listening service to anyone with thoughts of suicide. You can call the National Suicide Prevention Helpline UK on **0800 689 5652 (6 pm to midnight every day)**.

Campaign Against Living Miserably (CALM).

You can call the CALM on **0800 58 58 58** (5pm–midnight every day) if you are struggling and need to talk. Or if you prefer not to speak on the phone, you could try the CALM webchat service. <https://www.thecalmzone.net/get-support>

Shout - If you would prefer not to talk but want some mental health support, you could text **SHOUT** to **85258**. Shout offers a confidential 24/7 text service providing support if you are in crisis and need immediate help.

Side by Side - Minds online support community. A place to be heard, listen and share. <https://sidebyside.mind.org.uk>

Togetherall - A safe community to support your mental health, 24/7. Get support. Take control. Feel better. <https://togetherall.com/en-gb>

Hub of Hope

The Hub of Hope is the UK's leading mental health support database of local, national, peer, community, charity, private and NHS mental health support and services together in one place. Support available online or through the Hub of Hope App. <https://hubofhope.co.uk/>

Mental Health Matters - National Support service providing help for those struggling with their mental health **0191 516 3500** info@mh.org.uk

Depression UK

<https://www.depressionuk.org/>



National Mental Health and Wellbeing Support



Addiction

GamCare - Support for those struggling with a gambling addiction.
0808 8020 133

Alcoholic's Anonymous

Further information about the local meetings or A.A. group can be obtained by contacting
National Helpline 0800 9177 650
help@aamail.org

Frank - Advice, information and support for anyone concerned about drugs and substance misuse.

Helpline: 0300 123 6600 24/7 Text 82111

Local Support

Counselling by Sandwell African Caribbean Mental Health Foundation (Kuumba Foundation)

Up to eight sessions of counselling for people aged 16 and older from an African, Caribbean, Dual heritage background and the wider community recovering from functional mental ill health and carers.

Kuumba Centre Boulton Road, West Bromwich,
B70 6NW

0121 525 1629 info@sacmhf.co.uk

http://www.sacmhf.co.uk

While you're waiting, wellbeing activities.

by The Albion Foundation

Hill Top Community centre, Wednesbury
B70 0RZ

07533971324

david.jones@albionfoundation.co.uk

https://www.wba.co.uk/albion-foundation

Beyond-Blue

Counsellor in Wednesbury, England

Address: 19a, spring court, Spring Head,
Wednesbury WS10 9AD

07961 694667

National Domestic Abuse Services



If you are in immediate danger, call 999 and ask for the police.

If prompted, press 55 to Make Yourself Heard and this will transfer your call to the police. Pressing 55 only works on mobiles and does not allow police to track your location.

Call 999 from a landline

If the operator can only hear background noise and cannot decide whether an emergency service is needed, you will be connected to a police call handler. If you replace the handset, the landline may remain connected for 45 seconds in case you pick up again.

When 999 calls are made from landlines, information about your location should be automatically available to the call handlers to help provide a response.

If you are deaf or can't use a phone

You can register with the emergencySMS. Text REGISTER to 999. You will get a text which tells you what to do next. Do this when it is safe so you can text when you are in danger.

<https://www.emergencysms.net/>

Bright Sky app

Bright Sky is a mobile app and website for anyone experiencing domestic abuse, or who is worried about someone else.

The app can be downloaded for free from the app stores. **Only download the app if it is safe for you to do so and if you are sure that your phone isn't being monitored.**

Safe Spaces

Safe Spaces are available in Boots, Morrisons, Superdrug and Well pharmacies, TSB banks and independent pharmacies across the UK.

Ask for ANI codeword

If you are experiencing domestic abuse and need immediate help, ask for ANI (Action Needed Immediately) in participating pharmacies and Jobcentres

When you ask for ANI, you will be offered a private space, provided with a phone and asked if you need support from the police or other domestic abuse support services.

To find your nearest participating provider, search using the postcode checker on the Ask for Ani page on the Enough website.

<https://enough.campaign.gov.uk/get-support/ask-for-ani>

Refuge - Refuge offers a freephone, 24 hour National Domestic Abuse Helpline, Webchat, advice and guidance on what support is available to you.

Helpline - 0808 2000 247

Webchat - <https://www.nationaldahelpline.org.uk/en/Chat-to-us-online>

Women's Aid

Women's Aid's directory contains details of local, regional and national services specialising in violence against women and girls including domestic abuse, sexual violence, forced marriage and stalking/harassment.

<https://www.womensaid.org.uk/womens-aid-directory/>

If you are experiencing domestic abuse or are worried about friends or family, you can access the Women's Aid live chat service 7 days a week, 10am to 6pm.

helpline@womensaid.org.uk

National Domestic Abuse Services



Victim Support

Victim Support run these services for victims and survivors of any abuse or crime, regardless of when it occurred or if the crime was reported to the police: free, independent and confidential

24/7 Supportline - **08 08 16 89 111**

live chat service -

<https://www.victimsupport.org.uk/help-and-support/get-help/support-near-you/live-chat/>

My Support Space - free online resource

<https://www.mysupportspace.org.uk/>

Mankind

A confidential helpline is available for male victims of domestic abuse and domestic violence across the UK as well as their friends, family, neighbours, work colleagues and employers.

Helpline 01823 334244 open Monday to Friday 10am to 4pm

The website also includes a directory of services called the Oak Book Directory. This can be found by visiting <https://mankind.org.uk/help-for-victims/directory/>

Galop

Galop exists to help those who are lesbian, gay, bisexual or trans-plus (LGBT+) suffering domestic abuse, or biphobia, homophobia, transphobia or sexual violence.

800 9995 428.

<https://galop.org.uk/>

Charities and Grants

Heinz, Anna and Carol Kroch Foundation

Search by visiting

<https://grants-search.turn2us.org.uk/>

Smallwood Trust - www.smallwoodtrust.org.uk

Skinnners Benevolent Trust -

www.skinnners.org.uk/sbt

Family Support

NSPCC Helpline - 0808 800 5000

Childline - 0800 1111

Family Action

Provides grants to families in crisis, including those who have recently experienced domestic abuse.

<https://www.family-action.org.uk/what-we-do/grants/welfare-grants/>

Dogs Trust Freedom Project

Refuges for women leaving domestic abuse are often unable to take pets, including dogs. Dogs Trust offers free and confidential foster care while their owner is in a refuge.

www.dogstrust.org.uk/help-advice/hope-project-freedom-project/freedom-project

Cats Protection Paws Protect

Cats Protection has a network of fosterers that provides a retreat for cats of people going into a refuge until the owner has a safe place to live and they can be reunited.

www.cats.org.uk/what-we-do/paws-protect

Domestic Abuse Services in Sandwell



Government Support -

<https://www.gov.uk/guidance/domestic-abuse-how-to-get-help>

Support from a Job Centre

Jobcentres are a safe space and the DWP supports victims of domestic abuse. This includes helping you access temporary accommodation and supporting you to make new applications for Universal Credit and putting you in touch with local experts and support networks.

Citizen's Advice

Ask your local Citizens Advice if your local council operates a welfare assistance scheme or hardship fund and how you can apply.

IKWRO Women's Rights Organisation

Support for Middle Eastern, North African and Afghan survivors.

0208906460

07846275246 Kurdish/Arabic and English Speakers

07846310157 Farsi/Dari and English Speakers

Jewish Women's Aid - 0808 801 0500

Muslim Women's Network

0800 999 5786 or 0303 999 5786

info@mwnhelpline.co.uk

Local Support

Domestic Abuse Community Support

by Black Country Women's Aid
SWA (Sandwell Women's Aid) offer the nationally recognised Independent Domestic Violence (IDVA) Service.

Suite 21a Landchard House Victoria Street
West Bromwich, B70 8HY

0121 552 6448 (24 hour)

idva@sandwellwomensaid.co.uk

<https://www.sandwellwomensaid.co.uk>

Domestic Abuse Refuge

by Black Country Women's Aid
Organisation's Head Office (all refuge sites are confidential)

Suite 21a Landchard House Victoria Street
West Bromwich, B70 8HY

0121 552 6448 (24 hour)

info@sandwellwomensaid.co.uk

<https://www.sandwellwomensaid.co.uk>

Black Country Women's Aid for Domestic Abuse

0121 552 6448 24 hour call line

Text or WhatsApp: **07384 466 181**

Support for Disabilities in Sandwell



Local Support

Walking football

by The Albion Foundation

Walking football session, which is open to adults who have Parkinsons. It is also open to anyone who just wants to join in and have some fun. There is a small charge of £3 per person to play.

About our activities / service

WBA Community sports hall, Smethwick, B71 4LG

07733554005

lauren.holden@albionfoundation.co.uk

<https://www.wba.co.uk/albion-foundation>

FREE Women's Only Walking Cricket

by Staffordshire Cricket

West Bromwich Collegiate Academy

Kelvin Way, West Bromwich, B70 7LE

01785212120

enquiries@staffordshirecricket.co.uk

<https://www.staffordshirecricket.co.uk>

Sandwell Evening Discussion Group for Autistic Adults age 16yrs +

by Autism West Midlands - Sandwell

Community Church, Victoria Street, West Bromwich

B70 8EX

0121 450 7582

Aspire@autismwestmidlands.org.uk

<https://www.autismwestmidlands.org.uk/>

Visually Impaired Charity

West Bromwich Town Hall, Lodge Road,

B70 8AY

0121 525 4810

info@sandwellvisuallyimpaired.org.uk

<https://www.sandwellvisuallyimpaired.org.uk>

Let's Talk Hope cancer support group West Bromwich

Greets Green Access Centre, Tildasley Street
West Bromwich, B70 9SJ

0121 525 3909

Letstalkhope@yca-sandwell.org.uk

<http://www.yca-sandwell.org.uk>

SORT (Sandwell Outreach Recovery Team)

by The Kaleidoscope Plus Group

321 High Street, West Bromwich, B70 8LU

0121 565 8344

referral@kaleidoscopeplus.org.uk

<http://www.kaleidoscopeplus.org.u>

Let's Chat Community Hub: West Bromwich

by Community Transport

Community Hub will be offering free, confidential and impartial advice and signposting with a free drink and snack in a warm and welcoming environment.

West Bromwich Bus Station, near stand D

St Michael Street, Sandwell Centre, B70 7NN

07974626915

louise.colledge@communitytransport.org

Sandwell Deaf Community Association

An organisation for deaf people, run by deaf people to ensure that the deaf community are involved in all new service provision in Sandwell. The organisation offers support and development, community groups, youth services (play schemes for deaf children and youth club for deaf young people), events, training, research, advocacy, consultation and a third party reporting centre for hate crime.

Summer Street, West Bromwich, B71 4JA

07885 913225 info@sdca.co.uk

<https://www.sdca.co.uk>

National Support for Disabilities



Government Support

There is a wide range of disability-related financial support, including benefits, tax credits, payments, grants and concessions.

Some benefits you might get are:

- Universal Credit
- Personal Independence Payment (PIP) or Disability Living Allowance (DLA)
- Attendance Allowance
- New Style Employment and Support Allowance (ESA)

Vehicles and transport

If you're disabled you can apply for the following:

- exemption from paying vehicle tax
- parking benefits - Blue Badge
- disabled persons bus pass or Disabled Persons Railcard
- help to buy or lease a car from The Motability Scheme

To find out more visit

<https://www.gov.uk/financial-help-disabled>

Access to Work

Access to Work can help you get or stay in work if you have a physical or mental health condition or disability. Access to work may pay for

- special equipment, adaptations or support worker services to help you do things like answer the phone or go to meetings
- help getting to and from work
- mental health support
- communication support at a job interview (for example, a British Sign Language interpreter or a lipspeaker)

<https://www.gov.uk/access-to-work>

Disability Rights UK

Disability Rights UK is the UK's leading organisation led by, run by, and working for disabled people. To find out more visit <https://www.disabilityrightsuk.org/>

Citizens Advice

Citizens Advice can offer advice, support and guidance in finding what support is available to you. To find out more visit

<https://www.citizensadvice.org.uk/benefits/sick-or-disabled-people-and-carers/>

Scope

Scope provide practical information and emotional support when it's most needed.

Free disability helpline - **0808 800 3333**

Open Monday to Friday 9am to 6pm. Saturday to Sunday 10am to 6pm.

helpline@scope.org.uk

To access the support services and resources available visit

<https://www.scope.org.uk/advice-and-support/legal-information-and-your-rights/>

Money Helper

The Money Helper website provides resources and information to help those living with a disability to find the support that is available to them.

<https://www.moneyhelper.org.uk/en/benefits/benefits-if-youre-sick-disabled-or-a-carer/charitable-grants-for-ill-or-disabled-people>

RNIB

RNIB is an expert national organisation, ensuring blind and partially sighted people get practical support in all aspects of their lives.

0303 123 9999

National Support for Disabilities



Mencap

Mencap is a UK learning disability charity working with people with learning disabilities and their families and carers.

02074540454

information@mencap.org.uk

www.mencap.org.uk

National Autistic Society

The National Autistic Society is a charity which exists to champion the rights and interests of all people with autism and to ensure that they and their families receive quality services appropriate to their needs.

02078332299 nas@nas.org.uk

www.autism.org.uk

British Institute of Learning Disabilities (BILD)

A charity that exists to improve the quality of life of all people with a learning disability.

01562723010 enquiries@bild.org.uk

www.bild.org.uk

Disability Law Service

Disability Law Service offers a National Advice Line that provides specialist legal advice and information for disabled people, their families and carers.

02077919800 advice@dls.org.uk

www.dls.org.uk

HFT - Family Carer Support Service

The HFT Family Carer Support Service offers a variety of information and support to family carers.

01179061751

familycarersupport@hft.org.uk or info@hft.org.uk

www.hft.org.uk

Respond

Services for people with learning disabilities or autism, who've experienced abuse or trauma.

0207 383 0700 respond.org.uk

United Response

Support in England and Wales for people with learning disabilities, autism and mental health needs. Services include help with housing, supported living, education and employment.

unitedresponse.org.uk

Turning Point

Health and social care services in England for people with a learning disability. Also supports people with mental health problems, drug and alcohol abuse or unemployment.

turning-point.co.uk

Equality Advisory & Support Service (EASS)

Advice on issues relating to equality and human rights, including guidance for disabled people.

0808 800 0082

equalityadvisoryservice.com

Livability

Christian organisation providing care services for disabled people in England and Wales

020 7452 2110

livability.org.uk

Foundation for People with Learning Disabilities (FPLD)

Promotes the rights of people with a learning disability, and their families. FPLD also offer an easy-read online resource to help people with a learning disability to take care of their mental health.

learningdisabilities.org.uk

CHANGE

Helps organisations to support the rights of people with a learning disability. Its services include producing Easy Read resources and providing accessibility training.

changepeople.co.uk

National Support for Disabilities



Support for Carers

Mind

Being a carer can often be stressful and can have an impact on your mental health. Mind offers support to anyone who may be struggling.

Mind's helplines provide information and support by phone and email.

0300 123 3393 info@mind.org.uk

Local Minds offer face-to-face services across England and Wales. These services include talking therapies, peer support and advocacy.

<https://www.mind.org.uk/information-support/local-minds/>

Side by Side is Minds supportive online community for anyone experiencing a mental health problem.

<https://www.mind.org.uk/information-support/local-minds/>

Benefits for carers

You might not think of yourself as a carer. But you probably are if you're looking after someone regularly, including your spouse or a family member, because they're ill or disabled.

As a carer, you may be entitled to one or more state benefits to help you with the costs.

To find out more visit

<https://www.nhs.uk/conditions/social-care-and-support-guide/support-and-benefits-for-carers/benefits-for-carers/>

Carers UK

Carers UK is an online resource for those caring for someone. There is lots of helpful advice, guidance and resources available to support you.

0808 808 7777

advice@carersuk.org

To find out more visit

<https://www.carersuk.org/>

The Carers Trust Network

Carers Trust works with charities across the UK providing support for carers.

<https://carers.org/>

Migrant and Multi-Cultural Support in Sandwell



Extend Classes by Yemeni Community Association

Gender segregated Gentle Exercises (EXTEND) sessions run once a week. Clients participate in gentle exercise for less able people as well as having the opportunity to socialise. Group predominantly attended by Arabic, Pakistani and Indian clients who would prefer to access culturally sensitive and gender sensitive exercise classes.

Greets Green Access Centre, Tildasley Street West Bromwich, B70 9SJ

0121 525 3909

info@yca-sandwell.org.uk

https://www.yca-sandwell.org.uk

Building Brighter Futures - BBF

Building Brighter Futures (BBF) aims to bring isolated BME communities together and build strong relationships in and across communities.

Greets Green Resource Centre, Harwood Street B70 8PD

07799020468 shabud@cbo786.co.uk

https://www.cbo786.co.uk

The Aman Group (West Bromwich)

by Breakthru CIC

Improving women's (predominately South Asian Women) holistic wellbeing, through gentle exercise, informed sessions, trips out, befriending, relieving stress and anxiety, improving relationships, creating life balances, mindfulness, self-improvement, positive thinking and career support.

Central Library, Community Room (upstairs) 316 High Street, West Bromwich, B70 8DZ

0121 269 5990

info@break-thru.co.uk

https://break-thru.co.uk/aman-group

Advice and guidance

by Confederation of Bangladeshi Organisations Greets Green Resource Centre, Harwood Street West Bromwich, B70 9JF

0121 500 5441 info@cbo786.co.uk

https://www.cbo786.co.uk

Let's Talk Hope Crafty Cafe

by Yemeni Community Association in Sandwell Community Centre for Yemeni community in Sandwell, providing relevant activities. Also operates advice sessions.

Greets Green Access Centre, Tildasley Street West Bromwich, B70 9SJ

0121 525 3909

info@yca-sandwell.org.uk

http://www.yca-sandwell.org.uk

Useful Links

British Red Cross - RAMP@redcross.org.uk

SHAP - cdw@shap.org.uk

Oneworld Parish Nurse -

rachelsutton.parnurse@mail.com

Refugee Women Connect

info@refugeewomenconnect.org.uk

National Migrant and Multi-Cultural Support



BME Youth

BME Youth is a national youth organisation of children and young people from Black, Asian and Minority Ethnic (BAME) communities in the UK.

<https://www.bmeyouth.org.uk/about/>

Muslim Women's Network UK

MWNUK is the only national Muslim women's organisation in Britain. They offer a helpline, counselling services, training and workshops.

<https://www.mwnuk.co.uk/>

Migrants Rights Network

The Migrants' Rights Network is a UK charity that stands in solidarity with all migrants in their fights for rights and justice.

<https://migrantsrights.org.uk/>

The Muslim Community Helpline

The Muslim Community Helpline is a confidential, non-judgemental listening and emotional support service.

0208 908 6715 / 0208 904 8193

ess4m@btinternet.com

Boloh Helpline

Offers advice, signposting, emotional support and free therapy to adult asylum seekers UK Wide.

To find out more contact 0800 151 2605

Healthy Lifestyle Service

by Sandwell African Caribbean Mental Health Foundation (Kuumba Foundation)

Kuumba Centre, Boulton Road, West Bromwich, B70 6NW

0121 525 1629

info@sacmhf.co.uk

<https://www.sacmhf.co.uk>

Women and Men's Groups in Sandwell



Women's groups

Young Women's Trust

Young Women's Trust champions young women aged 18 to 30 on low or no pay. They offer young women free coaching, feedback on job applications and information to help them get where they want to be. To find out more visit <https://www.youngwomenstrust.org/get-support/>

The National Women's register

The website has a map of activities running across the UK, you can search groups by visiting <https://nwr.org.uk/network/groups/>

Ladies Circle

Ladies Circle provides the opportunity for women to connect across the UK.
<https://www.ladiescircle.co.uk/>

9-Week Women's Healthy Lifestyle Programme

by Yemeni Community Association
Lodge Community Centre, Lodge Road
West Bromwich, B70 9PJ
0121 525 3909
info@yca-sandwell.org.uk
<http://www.yca-sandwell.org.uk>

Men's Groups

ANDYSMANCLUB

ANDYSMANCLUB want to eliminate the stigma surrounding mental health and create a judgment-free, confidential space where men can be open about the storms in their lives. They have clubs across the UK that deliver weekly, free-to-attend peer-to-peer support groups for men aged over 18.
<https://andysmanclub.co.uk/find-your-nearest-group/>

Men's Shed Groups

Men's Shed Groups bring together social connections and friendship building, sharing skills and knowledge, and of course a lot of laughter. There are a number of groups across the UK, to find the one closest to you visit <https://menssheds.org.uk/find-a-shed/>

Men's 6 Weeks 'Healthy Minds, Healthy You'

by Yemeni Community Association in Sandwell
About our activities / service
YCA Cultural Centre
Tildasley Street, West Bromwich, B70 9SJ
0121 525 3909
info@yca-sandwell.org.uk
<http://www.yca-sandwell.org.uk>

National LGBTQ+ Support



LGBTQ+ National Support

Corner House Range of support opportunities for LGBTQ+ ages 11 to 17

Offer a support group for LGBTQ+ young people aged 11-17, who want to socialise with other young people experiencing similar things to them. This is a weekly session currently running on Zoom, Tuesdays 4.30 pm to 6 pm.

leahfewlass@wearecornerhouse.org

Mermaids Support for gender diverse young people and their families

Mermaids supports transgender, nonbinary and gender-diverse children and young people until their 20th birthday, as well as their families and professionals involved in their care.

www.mermaidsuk.org.uk

0808 801 0400 Monday to Friday 9 am –to 9 pm

Stonewall

Stonewall stand for lesbian, gay, bi, trans, queer, questioning and ace (LGBTQ+) people everywhere. The website provides resources for individuals and workplaces across the UK.

www.stonewall.org.uk

Mind - Mindline Trans+ - helpline for LGBT / non-binary people - **0300 330 5468**

Mindout

MindOut is a mental health service run by and for lesbian, gay, bisexual, trans, and queer (LGBTQ) people. We work to improve the mental health and wellbeing of all LGBTQ communities and to make mental health a community concern.

01273 234839 info@mindout.org.uk

LGBT Hero

LGBT HERO provide information, advice and various types of support including one-to-one, group and peer-support on a range of topics including mental health, sexual health, Living with HIV, coming out, gender and sexuality and hate crime and discrimination. LGBT HERO also campaigns for LGBTQ+ people to lead happier, healthier lives.

<https://www.lgbthero.org.uk/>

LGBT Foundation

The LGBT Foundation services have been designed by LGBT+ people for LGBTQ+ people. They offer a number of services including talking therapies, sexual health support, helpline, befriending, peer support, advocacy and much more.

<https://lgbt.foundation/>

Switchboard

Switchboard is for all. Figuring out your gender expression? Questioning your sexuality? Or is someone you care about facing a challenge? Wherever you fit into the picture, they are here to listen. Acknowledging and celebrating wherever people are on their journey, we meet you where you are.

0800 0119 100 Open 10 am to 10 pm

hello@switchboard.lgbt

<https://switchboard.lgbt/get-support>

TransUnite

Have an online directory of trans support groups near you.

<https://www.transunite.co.uk/find-a-group/>

National Support Services



Sexual Violence Support

Silent Solution

Helps people who are unable to speak, but who genuinely need police assistance. After calling 999, dial 55 to be put through to your local police station. If you are not able to speak, listen carefully to the questions and instructions from the call handler so they can assess your call and arrange help if needed.

Rape Crisis

If something sexual happened to you without your consent – or you're not sure – you can talk to a member of the team. No matter when it happened. **0808 500 2222** open 24 hours a day
<https://rapecrisis.org.uk/get-help/>

Galop

A UK LGBT+ anti-abuse charity, provides a dedicated sexual violence helpline for LGBT+ people who have experienced sexual assault, violence or abuse, however or whenever it happened.

Victims can contact the Helpline by phone 0800 999 5428 or via email help@galop.org.uk.

The 24/7 Rape and Sexual Abuse Support Line

247 offers Free, specialist and confidential support delivered by Rape Crisis England & **0808 500 2222**

To chat online or find out more visit

<https://247sexualabusesupport.org.uk>

National Online Helpline for Male Survivors

Operated by Survivors UK. Supports men and boys (trans or cisgender) and non-binary people who have ever experienced unwanted sexual activity. Live chat, SMS and email support.

<https://www.survivorsuk.org/>

Safeline

A dedicated service in England and Wales for adults and children affected by rape or sexual abuse who identify as male and for those that support them such as friends and family.

<https://www.safeline.org.uk>

0808 800 5005 or visit

<https://www.safeline.org.uk/contact-us/> to chat online

Text support: **07860 065187** Open Monday to Friday 9 am to 8 pm, Saturday and Sunday 10 am to 2 pm.

The Survivors Trust

The Survivors Trust provides confidential information, advice and support for women, men and young people, their parents/carers or partners via a helpline or email.

08088 010818

info@thesurvivorstrust.org

More information can be found at

www.thesurvivorstrust.org

Victim Support

If you've been affected by sexual violence and would like information or support, you can get in touch by:

contacting your local Victim Support team

<https://www.victimsupport.org.uk/help-and-support/get-help/support-near-you/>

Calling the Supportline on **08 08 16 89 111** using the free 24/7 live chat service

<https://www.victimsupport.org.uk>

If English is not your first language and you would like support, call supportline and let us know which language you speak. They will call you back with an interpreter as soon as possible. They also welcome calls via Relay UK and SignLive (BSL).

Support Services in Sandwell



Black Country Rape and Sexual Violence Support Service

by Black Country Women's Aid
Suite 21a Landchard House Victoria Street
West Bromwich, B70 8HY

0121 553 0090 (9-5 weekdays)

ISVA@sandwellwomensaid.co.uk

<https://www.sandwellwomensaid.co.uk>

Black Country Women's Aid

by Black Country Women's Aid
Suite 21a Landchard House Victoria Street
West Bromwich, B70 8HY

0121 552 6448 (24 hour)

kat@sandwellwomensaid.co.uk

<https://www.sandwellwomensaid.co.uk>

Victim Support

Victim Support is an independent charity dedicated to supporting victims of crime and traumatic incidents in England and Wales.

Room 4G YMCA, 38 Carters Green, West Bromwich,
B70 9LG

0300 303 1977

ian.borland@victimsupport.org.uk

<https://www.victimsupport.org.uk/>

Support for young victims of rape and sexual violence aged 11-18

SWA's specialist Young People's ISVA (Independent Sexual Violence Adviser) offers support and advice to any survivors of rape and sexual violence aged 11-18.

Suite 21a Landchard House Victoria Street
West Bromwich

B70 8HY

0121 553 0900

info@sandwellwomensaid.co.uk

<https://www.sandwellwomensaid.co.uk>

Ask Marc

Help and support for men affected by domestic abuse, stalking and rape and sexual violence.

1st Floor Lanchard House, Victoria Street
West Bromwich, B70 8HY

info@askmarc.org.uk 0121 289 6402

Hate Crime

Report a hate crime

You can report a hate crime online or call 101 to speak to the police.

Call 999 if you're reporting a crime that's in progress or if someone is in immediate danger.

Stop Hate UK

Stop Hate UK is available 24 hours a day. The helpline is confidential and independent.

You can report a hate crime by:

0800 138 1625 Text: 07717 989 025

Text relay: 18001 0113 293 5100

Webchat at www.stophateuk.org/talk-to-us

Victim Support: (24/7 support)

Victim Support operates a 24/7 Supportline and live chat service, every day of the year, offering specialist emotional and practical support to anyone who has been a victim or a witness. You don't have to report a crime to get help from Victim Support.

0808 16 89 111

Live chat available by visiting

<https://www.victimsupport.org.uk/help-and-support/get-help/support-near-you/live-chat>

Hate Crime Campaign

The Hate Crime Campaign provides information and services to those who have been a victim of Hate Crime.

<https://hatecrime.campaign.gov.uk/>

Support Services in Sandwell



Friday Health Walk

by The Albion Foundation

About our activities / service

Ford Street offices, Wednesbury, B70 0RZ

07533971324

david.jones@albionfoundation.co.uk

Myra Harris Sessions

by Riverside

Bingo Club Thursday 12 pm to 2 pm

Warm Hub Tuesday 10 am to 12 pm

The Myra Harris Community Room, Brickhouse Lane,
West Bromwich, B70 0DZ

0121 532 5426

Deniseann.heginbotham@riverside.org.uk

Free Arts and Crafts group

Free arts and crafts sessions every Saturday morning, use our craft equipment or bring your own project along, we welcome all crafts, such as latch hook, knitting, cross stitch, scrap book making etc. Free drinks and snacks available starting 10 am to 12 pm Lets chat hub, West Bromwich bus station next to stand D, B707NN

07974626915

louise.colledge@communitytransport.org

<https://www.communitytransport.org>

Adult crafting group

by The Gap Centre

The Gap Centre, Hargate Lane, West Bromwich
B71 1PH

0121 525 4442

kirsty@thegaponline.org

<https://www.thegaponline.org>

Adult crafting group The Gap Centre

Every Tuesday 11 am to 1 pm During school holidays

Tuesday Evening 6.30 pm to 8.30pm, bring your own crafting project and enjoy the company of other likeminded crafter. We also provide card making, wool, sewing machines, material, general crafts and adult colouring £2 per session

Hargate Lane, West Bromwich, B71 1PH

0121 525 4442

kirsty@thegaponline.org

<https://www.thegaponline.org>